

## WEAVING GLOBAL MOISTURE

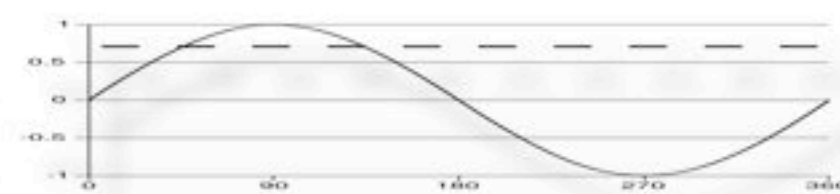
18 April - Project Day 34

# PME

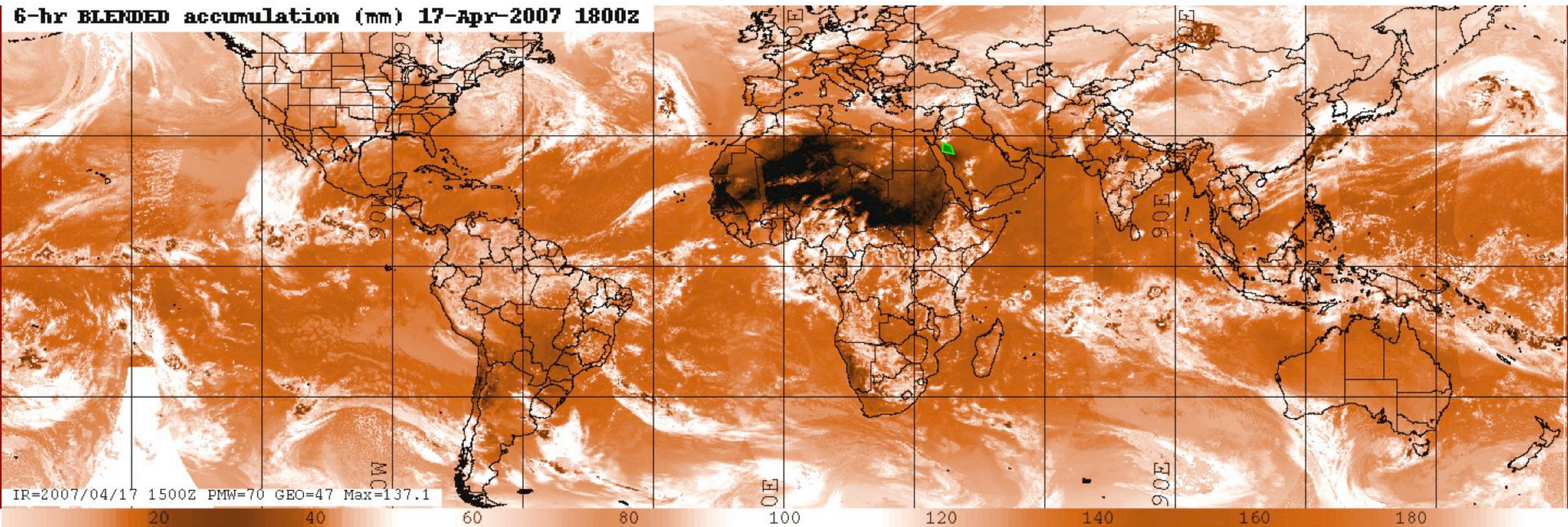
[← BACK](#)

During the project, careful observation has revealed  
harmonic wave-forms in the moisture flow  
patterns, directly aimed at the designated target...

# Sine Wave

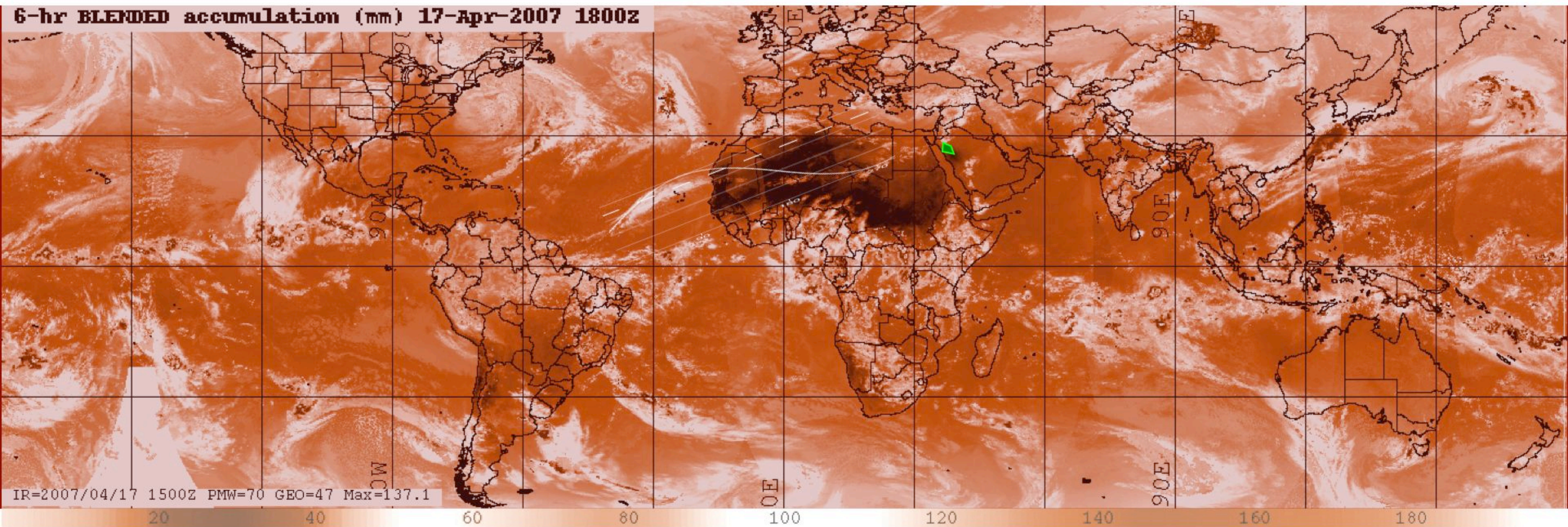


6-hr BLENDED accumulation (mm) 17-Apr-2007 1800z



Data from US Department of Defence analysis (satellite IR and Microwave) of global moisture flow

URL: [http://www.nrlmry.navy.mil/adap-bin/adap\\_sens\\_table.cgi?TIME=20070417.1800&DIR=6-hour&ADJ=&PROD=geo&START=0](http://www.nrlmry.navy.mil/adap-bin/adap_sens_table.cgi?TIME=20070417.1800&DIR=6-hour&ADJ=&PROD=geo&START=0)



One of multiple sine waves revealed by the blended satellite images and data (Overlaid Target and Sine curve)

URL: [http://www.nrlmry.navy.mil/adap-bin/adap\\_sens\\_table.cgi?TIME=20070417.1800&DIR=6-hour&ADJ=&PROD=geo&START=0](http://www.nrlmry.navy.mil/adap-bin/adap_sens_table.cgi?TIME=20070417.1800&DIR=6-hour&ADJ=&PROD=geo&START=0)

